

DOCUMENT 00 90 00
ADDENDUM

ADDENDUM No.: 1

DATE: December 27, 2022

RE: HOUSING AUTHORITY OF THE CITY OF LA CROSSE
MULLEN HOMES ROOF REPLACEMENT
WINNESHIEK RD, ST JAMES ST
LA CROSSE, WISCONSIN 54603
PROJECT NO. 22062

FROM: HSR Associates, Inc
100 Milwaukee Street
La Crosse, WI 54603
(608) 784-1830

TO: Prospective Bidders

This addendum forms a part of the Contract Documents and modifies the original Bidding Documents dated December 2022. Acknowledge receipt of this Addendum in the space provided on the bid form. Failure to do so may subject the Bidder to disqualification.

This Addendum consists of: 2 pages, 1 document, 1 section, and 1 sheet.

PRE-BID MEETING:

1. Sign-In Sheet – Date 12/20/2022

CHANGES TO GENERAL REQUIREMENTS:

2. Section 01 10 00 Summary
 - a. See the narrative, immediately below, describing revisions to the section.
 - b. Revise paragraph 1.08 A as follows:

“Date of Commencement of the Work: ~~April 1, 2023~~. Contractor Option: Following notice to proceed, begin work onsite as soon as conditions are suitable to perform the work.”
3. Section 01 50 00 Temporary Facilities and Controls
 - a. See the narrative, immediately below, describing revisions to the section.
 - b. Revise paragraph 1.04 B.1. as follows:

“The Contractor shall provide their own electricity. However, the Owner will make the garage at the end of St. James St available to the Contractor for charging of tools, staging and minor storage. There will be no charge for electricity provided by the owner in this manner. Where needed power requirements are not met by the Owner's service described above Contractor shall provide portable power to meet the project needs.”
 - c. Delete paragraph 1.04 B.2. and 1.04 B.3.

- d. Add paragraph 1.11 F. as follows:
"Vehicles / trailers are allowed to be on the lawn areas, contractors shall fix any depressions deeper than 3" made with vehicles/trailers with sod and topsoil fill."

CHANGES TO SPECIFICATIONS:

4. Section 07 41 13 Metal Roof Panels
 - a. See the new section included in this addendum.
 - b. Revised paragraph 1.07 C. to revise weather-tightness warranty from 2 years to 20 years.
 - c. Added paragraph 2.02 B. to reference design loads per ASCE 7 and minimum snow loads.
 - d. Added paragraph 2.02 C.1.e. to specify impact resistance (UL 2218) of class 4.
 - e. Revised paragraph 2.02 C.1.5. to permit contractor's option of panel widths of 16 and 20 inches.
 - f. Added paragraph 2.06 B. to specify Steel Roof Caps at bathroom vents.
 - g. Added paragraph 3.03 A.3 to require laying out panels to avoid penetrations through seams and other manufacturer prohibited areas of the panels.

CHANGES TO DRAWINGS

5. Sheet A110 ROOF PLANS 30"x42"
 - a. See the revised sheet included in this addendum. Disregard the previous version.
 - b. Revised General Note A to require removal of existing exhaust vents.
 - c. Revised Key Note #6 to eliminate reference to "existing vents".
 - d. Added Key Note #7 to require new exhaust vents.

END OF DOCUMENT 00 90 00

Pre-Bid Meeting Sign-In Sheet

December 20, 2022

PROJECT: HOUSING AUTHORITY OF THE CITY OF LA CROSSE
MULLEN HOMES ROOF REPLACEMENT
LA CROSSE, WI
HSR 22062

BID OPENING: 2:00 PM, January 5, 2023

Name	Company
1. Doug Ramsey	HSR Associates
2. Mike Lorens	HSR Associates
3. Jim Hagg	Camp-H Roofing
4. JOHN BRAUNDT	BRAUNDT BUILDERS
5. Jeremy Gauderson	LHA
6. Branden Jones	The Metal Roof Company
7. STEVE SCHAUF	LHA
8. Ethan Giese	American
9.	
10.	
11.	
12.	
13.	
14.	
15.	
16.	
17.	
18.	
19.	
20.	

Page Intentionally Left Blank

**SECTION 07 41 13
METAL ROOF PANELS**

PART 1 GENERAL

1.01 SECTION INCLUDES

- A. Architectural roofing system of preformed steel panels, eave, edge and ridge trim, and accessories.
- B. Snow guards.

1.02 RELATED REQUIREMENTS

- A. Section 06 10 00 - Rough Carpentry: Roof sheathing replacement at locations where the existing sheathing is unsuitable.

1.03 REFERENCE STANDARDS

- A. AAMA 2605 - Voluntary Specification, Performance Requirements and Test Procedures for Superior Performing Organic Coatings on Aluminum Extrusions and Panels (with Coil Coating Appendix) 2013.
- B. ASCE 7 - Minimum Design Loads for Buildings and Other Structures 2010, with 2013 Supplements and Errata.
- C. ASTM A653/A653M - Standard Specification for Steel Sheet, Zinc-Coated (Galvanized) or Zinc-Iron Alloy-Coated (Galvannealed) by the Hot-Dip Process 2015.
- D. ASTM B209/B209M - Standard Specification for Aluminum and Aluminum-Alloy Sheet and Plate 2021.
- E. ASTM D226/D226M - Standard Specification for Asphalt-Saturated Organic Felt Used in Roofing and Waterproofing 2009.
- F. ASTM D1970/D1970M - Standard Specification for Self-Adhering Polymer Modified Bituminous Sheet Materials Used as Steep Roofing Underlayment for Ice Dam Protection 2015a.
- G. ASTM D4869/D4869M - Standard Specification for Asphalt-Saturated Organic Felt Underlayment Used in Steep Slope Roofing 2016a.
- H. ASTM E84 - Standard Test Method for Surface Burning Characteristics of Building Materials 2016.
- I. ASTM E96/E96M - Standard Test Methods for Water Vapor Transmission of Materials 2016.

1.04 SUBMITTALS

- A. See Section 01 30 00 - Administrative Requirements for submittal procedures.
- B. Product Data: Manufacturer's data sheets on each product to be used, including:
 - 1. Summary of test results, indicating compliance with specified requirements.
 - 2. Storage and handling requirements and recommendations.
 - 3. Installation methods.
 - 4. Specimen warranty.
- C. Shop Drawings: Include layouts of roof panels, details of edge and penetration conditions, spacing and type of connections, flashings, underlayments, and special conditions.
 - 1. Show work to be field-fabricated or field-assembled.
- D. Selection Samples: For each roofing system specified, submit color chips representing manufacturer's full range of available colors and patterns.
- E. Verification Samples: For each roofing system specified, submit panel sample of minimum length of 12 inches long, representing actual roofing metal, thickness, profile, color, and texture.
 - 1. Include typical panel joint in sample.
 - 2. Include typical fastening detail.
- F. Manufacturer's qualification statement.
- G. Installer's qualification statement.
- H. Test Reports: Indicate compliance of metal roofing system to specified requirements.
- I. Warranty: Submit specified manufacturer's warranty and ensure that forms have been completed in Owner's name and are registered with manufacturer.

1.05 QUALITY ASSURANCE

- A. Manufacturer Qualifications: Company specializing in manufacturing products specified in this section, with not less than five years of documented experience.
- B. Installer Qualifications: Company specializing in performing work of the type specified and with at least three years of documented experience.

1.06 DELIVERY, STORAGE, AND HANDLING

- A. Store roofing panels on project site as recommended by manufacturer to minimize damage to panels prior to installation.

1.07 WARRANTY

- A. See Section 01 78 00 - Closeout Submittals for additional warranty requirements.
- B. Finish Warranty: Provide manufacturer's special warranty covering failure of factory-applied exterior finish on metal roof panels and agreeing to repair or replace panels that show evidence of finish degradation, including significant fading, chalking, cracking, or peeling within specified warranty period of 20 year period from date of Substantial Completion.
- C. Special Warranty: Provide 20 warranty for weathertightness of roofing system, including agreement to repair or replace metal roof panels that fail to keep out water commencing on the Date of Substantial Completion. Complete forms in Owner's name and register with warrantor.

PART 2 PRODUCTS

2.01 MANUFACTURERS

- A. Architectural Metal Roof Panel Manufacturers:
 - 1. ATAS International, Inc: www.atas.com/sle.
 - 2. Berridge Manufacturing Company: www.berridge.com/#sle.
 - 3. Holcim Elevate: www.stage.holcimelevate.com.
 - 4. McElroy Metal: www.mcelroymetal.com
 - 5. Metal Roofing Systems, Inc: www.metalroofingsystems.biz/#sle.
 - 6. Morin Corporation: www.morincorp.com/#sle.
 - 7. MS Metal Sales Manufacturing Corp; metalsales.us.com
 - 8. Petersen Aluminum Corporation: www.pac-clad.com/sle.

2.02 METAL ROOF PANELS

- A. Metal Roof Panels: Provide complete engineered system complying with specified requirements and capable of remaining weathertight while withstanding anticipated movement of substrate and thermally induced movement of roofing system.
- B. Design Loads: In accordance with ASCE 7, current edition.
 - 1. Design Snow Load: Not Less than 20 psf.
- C. Metal Panels: Factory-formed panels with factory-applied finish.
 - 1. Steel Panels:
 - a. Zinc-coated steel complying with ASTM A653/A653M; minimum G60 galvanizing.
 - b. Wind uplift in compliance with UL Classification 580 for Classified 90 rated assemblies.
 - c. Thermal Performance/Effects: Roof panels shall be free to move in response to expansion and contraction forces resulting from temperature variation as specified in the MBMA Metal Roofing Systems Design Manual.
 - d. Deflection: In accordance to ASCE 7, but not less than a minimum L/180 for roof snow load.
 - e. Impact Resistance: Minimum of Class 4, when tested in accordance with UL 2218.
 - f. Steel Thickness: Minimum 24 gauge, 0.024 inch.
 - 2. Profile: Standing seam, with minimum 1.5 inch seam height; concealed fastener system for field seaming with special tool. (90 or 180 degree double lock)
 - a. Striated
 - 3. Texture: Smooth, .
 - 4. Length: Full length of roof.
 - 5. Width: Panel coverage of 18 inches. Contractor's option for 16 inch and 20 panels.
 - 6. Color: Selected by A/E from manufacturer's full range.

2.03 ATTACHMENT SYSTEM

- A. Concealed System: Provide manufacturer's standard stainless steel concealed anchor clips designed for specific roofing system and engineered to meet performance requirements, including anticipated thermal movement.

2.04 FABRICATION

- A. Panels: Provide factory or field fabricated panels with applied finish and accessory items, using manufacturer's standard processes as required to achieve specified appearance and performance requirements.
- B. Joints: Provide captive gaskets, sealants, or separator strips at panel joints to ensure weathertight seals, eliminate metal-to-metal contact, and minimize noise from panel movements.

2.05 FINISHES

- A. Fluoropolymer Coil Coating System: Manufacturer's standard multi-coat metal coil coating system complying with AAMA 2605, including at least 70 percent polyvinylidene fluoride (PVDF) resin, and at least 80 percent of coil coated metal surfaces having minimum total dry film thickness (DFT) of 0.9 mil, 0.0009 inch; color and gloss to match sample.

2.06 ACCESSORIES

- A. Miscellaneous Sheet Metal Items: Provide flashings, gutters, downspouts, trim, moldings, closure strips, preformed crickets, caps, and equipment curbs of the same material, thickness, and finish as used for the roofing panels. Items completely concealed after installation may optionally be made of stainless steel.
- B. Bathroom Vent Weatherhead Hoods: Broan 636.
 - 1. Substitutions: See Section 01 60 00 - Product Requirements.
- C. Rib and Ridge Closures: Provide prefabricated, close-fitting components of combination steel and closed-cell foam.
- D. Clip fasteners: Stainless steel in size as recommended by system supplier.
- E. Snow Retention: Continuous fence type snow guard that accepts color matched sheetmetal insert. Provide aluminum sheetmetal ASTM B209 inserts that match roofing panel material color.
 - 1. Manufacturer's:
 - a. Dynamic Fastener: Dyna-Guard with Sno-Dams. www.dynamicfastener.com
 - b. Alpine Snowguards; Sno-Max Standing Seam: www.alpinesnowguards.com
 - c. S-5!; ColorGard: www.s-5.com
 - 2. Clamps: Manufacturer selected to match roofing system.
 - 3. Bar: Aluminum, mill finish, color to match roof or with face color to match roof.
- F. Pipe Flashing: EPDM boot bonded to aluminum base with manufacturer's 20 year warranty. Buildex Decktite or as acceptable to roof panel manufacturer.
- G. Sealants:
 - 1. Exposed Sealant: Elastomeric; silicone, polyurethane, or silyl-terminated polyether/polyurethane.
 - 2. Concealed Sealant: Non-curing butyl sealant or tape sealant.
 - 3. Seam Sealant: Factory-applied, non-skinning, non-drying type.
- H. Underlayment: Self-adhering rubber-modified asphalt sheet complying with ASTM D1970/D1970M; 40 mil total thickness; with strippable release film and woven polypropylene sheet top surface.
 - 1. Sheet Thickness: 40 mil, 0.040 inch minimum total thickness.
 - 2. Self Sealability: Nail sealability in accordance with ASTM D1970/D1970M.
 - 3. Low Temperature Flexibility: Comply with ASTM D1970/D1970M.
 - 4. Water Vapor Permeance: 0.067 perm, maximum, when tested in accordance with ASTM E96/E96M Procedure A (desiccant method).
 - 5. Performance: Meet or exceed requirements for ASTM D226/D226M, Type II asphalt-saturated organic felt.
 - 6. Liquid Water Transmission: Passes ASTM D4869/D4869M.
 - 7. Functional Temperature Range: Minus 70 degrees F to 212 degrees F.
 - 8. Products:

- a. Henry Company; Blueskin PE200HT: www.henry.com/#sle.
- b. Grace: Ice & Water Shield HT. www.graceresidential.com
- c. Substitutions: See Section 01 60 00 - Product Requirements.

PART 3 EXECUTION

3.01 EXAMINATION

- A. Do not begin installation of preformed metal roof panels until substrates have been properly prepared.
- B. If substrate preparation is the responsibility of another installer, notify Architect of unsatisfactory preparation before proceeding.

3.02 PREPARATION

- A. Broom clean wood sheathing prior to installation of roofing system.
- B. Coordinate roofing work with provisions for roof drainage, flashing, trim, penetrations, and other adjoining work to ensure that completed roof will be free of leaks.
- C. Coordinate installation of waterproof membrane over roof sheathing with Section 06 10 00.
- D. Remove protective film from surface of roof panels immediately prior to installation; strip film carefully to avoid damage to prefinished surfaces.
- E. Separate dissimilar metals by applying a bituminous coating, self-adhering rubberized asphalt sheet, or other permanent method approved by metal roof panel manufacturer.
- F. At locations where metal will be in contact with wood or other absorbent material subject to wetting, seal joints with sealing compound and apply one coat of heavy-bodied bituminous paint.

3.03 INSTALLATION

- A. Overall: Install roofing system (insulation, sheathing, waterproof membrane and metal panels) in accordance with approved shop drawings and panel manufacturer's instructions recommendations and to meet warranty requirements, as applicable to specific project conditions. Anchor all components of roofing system securely in place while allowing for thermal and structural movement.
 1. Install roofing system with concealed clips and fasteners, except as otherwise recommended by manufacturer for specific circumstances.
 2. Minimize field cutting of panels. Where field cutting is required, use methods that will not distort panel profiles. Use of torches for field cutting is prohibited.
 3. Penetrations. Layout panels to avoid penetrations at seams between panels and at other locations prohibited by manufacturer. Relocate reinstalled bathroom vents as necessary.
- B. Accessories: Install necessary components that are required for complete roofing assembly, including flashings, trim, moldings, closure strips, preformed crickets, caps, equipment curbs, rib closures, ridge closures, and similar roof accessory items.
- C. Install perimeter blocking, sub-fascia and related blocking.
- D. Install plywood sheathing as approved, See 06 10 00 and 01 22 00.
- E. Underlayment: Install waterproof membrane on roof deck before installing preformed metal roof panels. Secure by methods acceptable to roof panel manufacturer, minimizing use of metal fasteners. Apply from eaves to ridge in shingle fashion, overlapping horizontal joints a minimum of 3.5 inches and side and end laps a minimum of 6 inches.
- F. Roof Panels: Install panels in strict accordance with manufacturer's instructions, minimizing transverse joints except at junction with penetrations.
 1. Form weathertight standing seams incorporating concealed clips, using an automatic mechanical seaming device approved by panel manufacturer.
 2. Install sealant or sealant tape at end laps and side joints as recommended by metal roof panel manufacturer.

3.04 SNOW RETENTION

- A. Install clamps at every seam.
- B. Bars shall be perpendicular to roof panel.
- C. Distance From Eaves: At bearing wall location or 18 inches from roof edge.

D. Follow manufacturer's layout design for quantity and spacing.

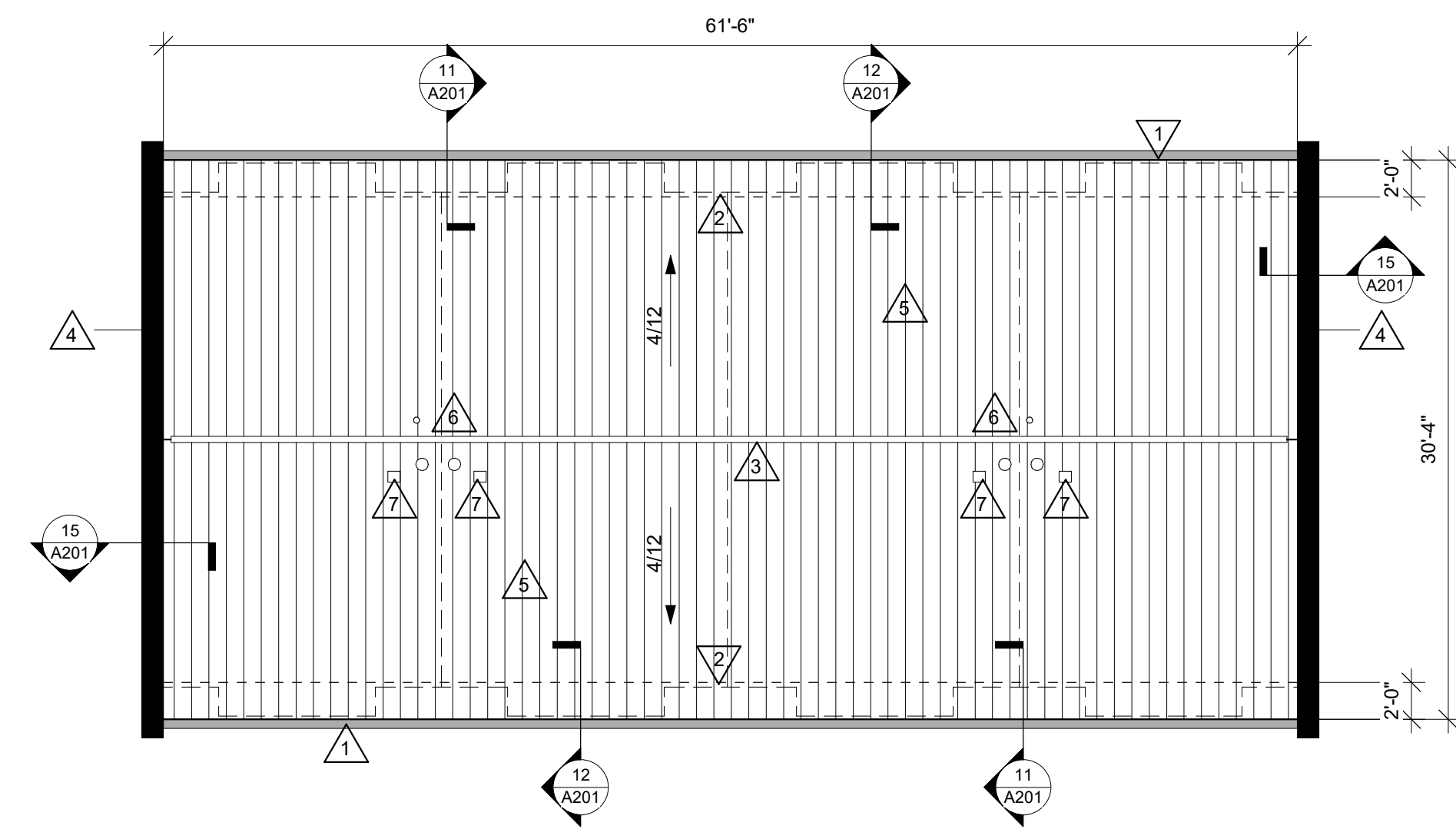
3.05 CLEANING AND PROTECTION

- A. Clean exposed sheet metal work at completion of installation. Remove grease and oil films, excess joint sealer, handling marks, and debris from installation, leaving the work clean and unmarked, free from dents, creases, waves, scratch marks, or other damage to the finish.
- B. Do not permit storage of materials or roof traffic on installed roof panels. Provide temporary walkways or planks as necessary to avoid damage to completed work. Protect roofing until completion of project.
- C. Touch-up, repair, or replace damaged roof panels or accessories before Date of Substantial Completion.

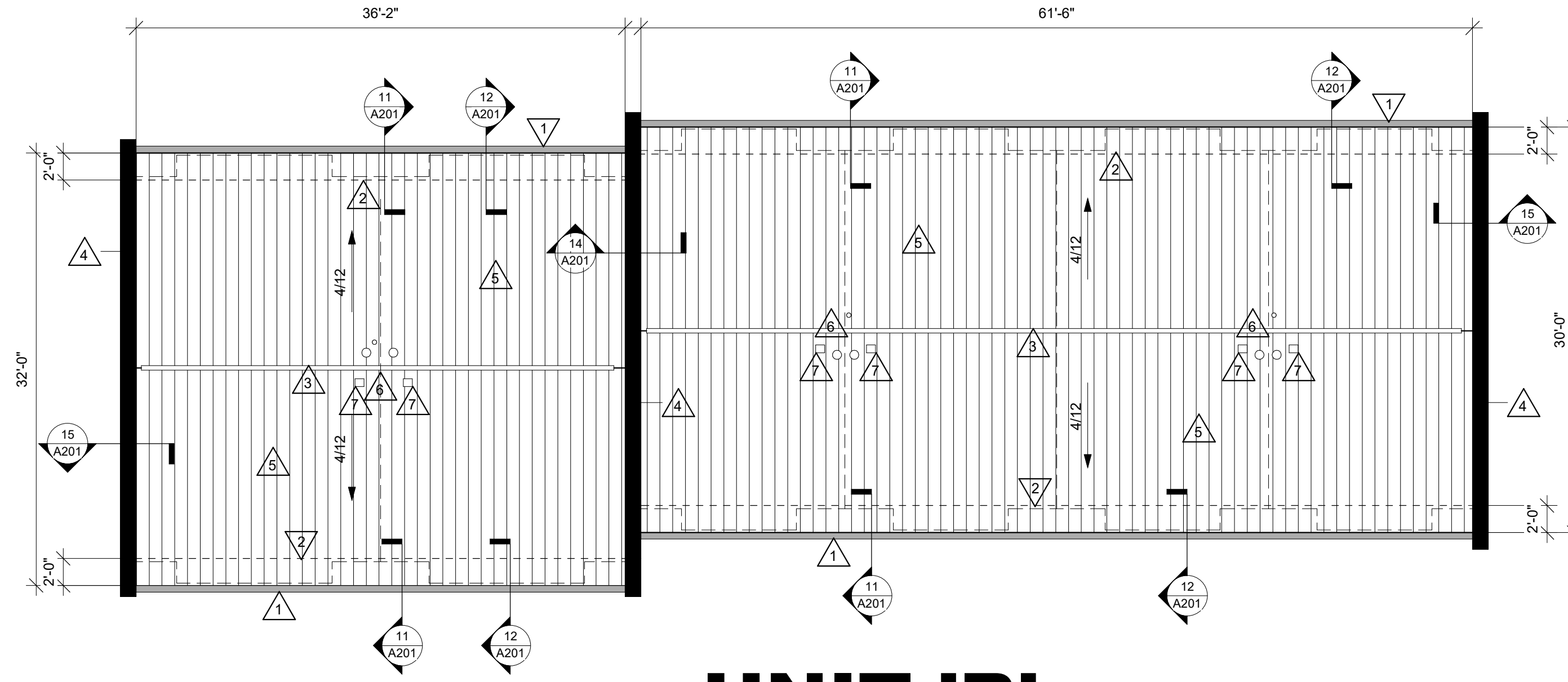
END OF SECTION

Page Intentionally Left Blank

△ SEE LOCATIONS BELOW



UNIT 'A'



UNIT 'B'

GENERAL NOTES:

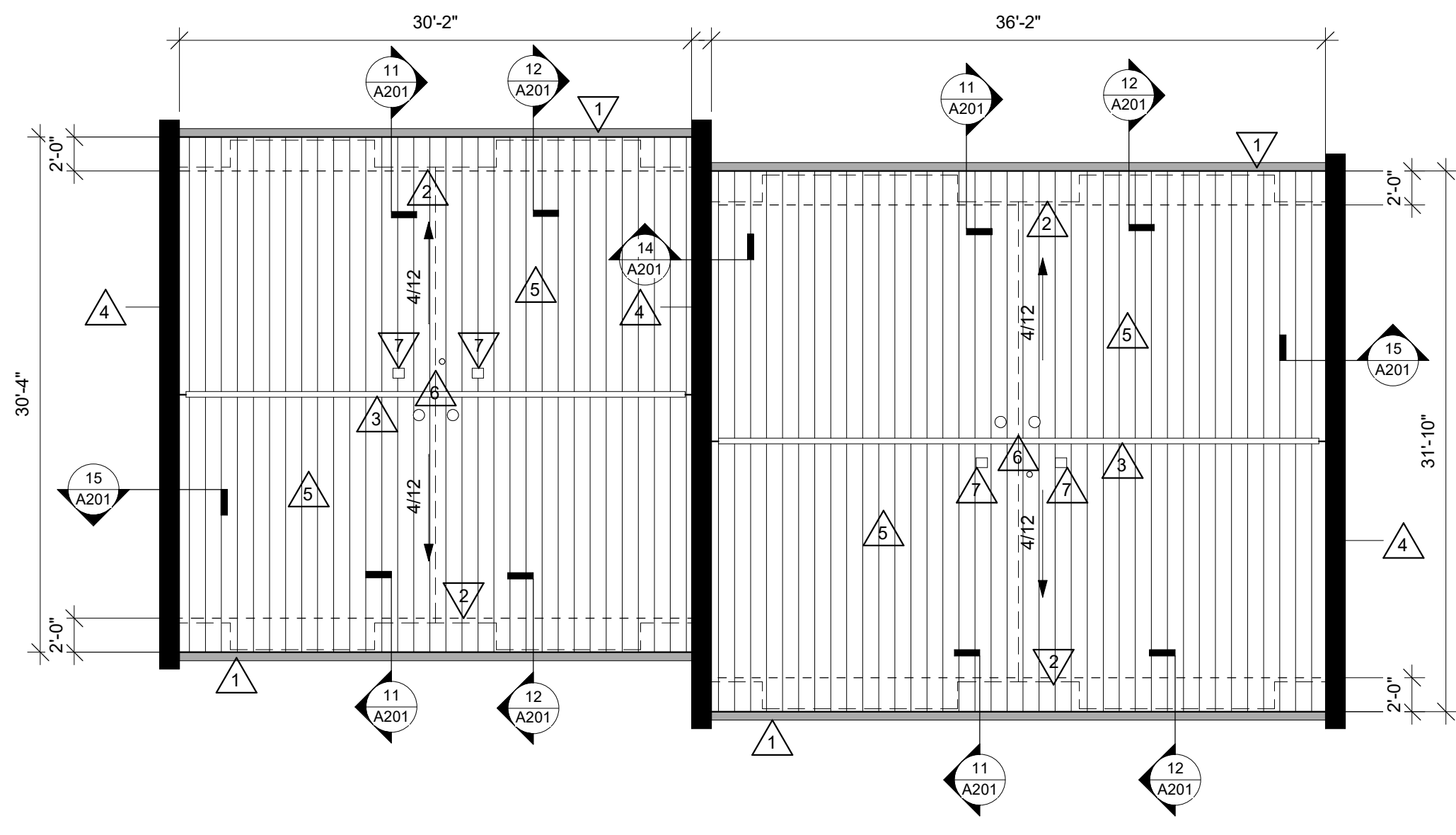
- A REMOVE EXISTING SHINGLES, EDGING, FLASHING, EXHAUST VENTS AND PIPE BOOTS.
- B INSPECT PLYWOOD UNDERLAYMENT, REPLACE IF REQUIRED. SEE SPECS FOR UNIT PRICING.
- C FIELD VERIFY ALL DIMENSIONS.

ROOF SYSTEM DESCRIPTION:

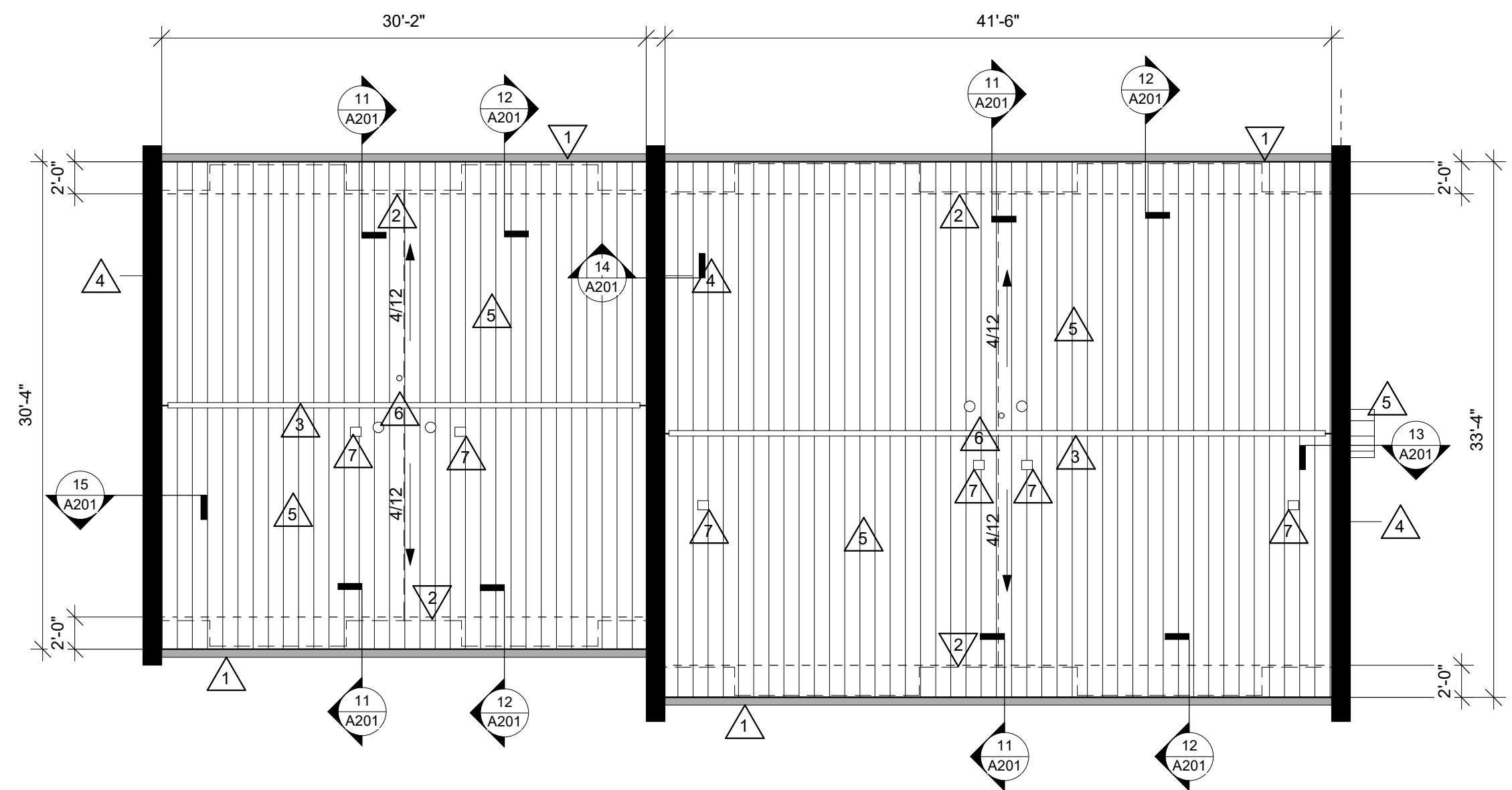
STANDING SEAM METAL ROOF SYSTEM OVER WATERPROOF MEMBRANE OVER EXISTING/REPLACED PLYWOOD AND TRUSSES.

KEY NOTES ROOF

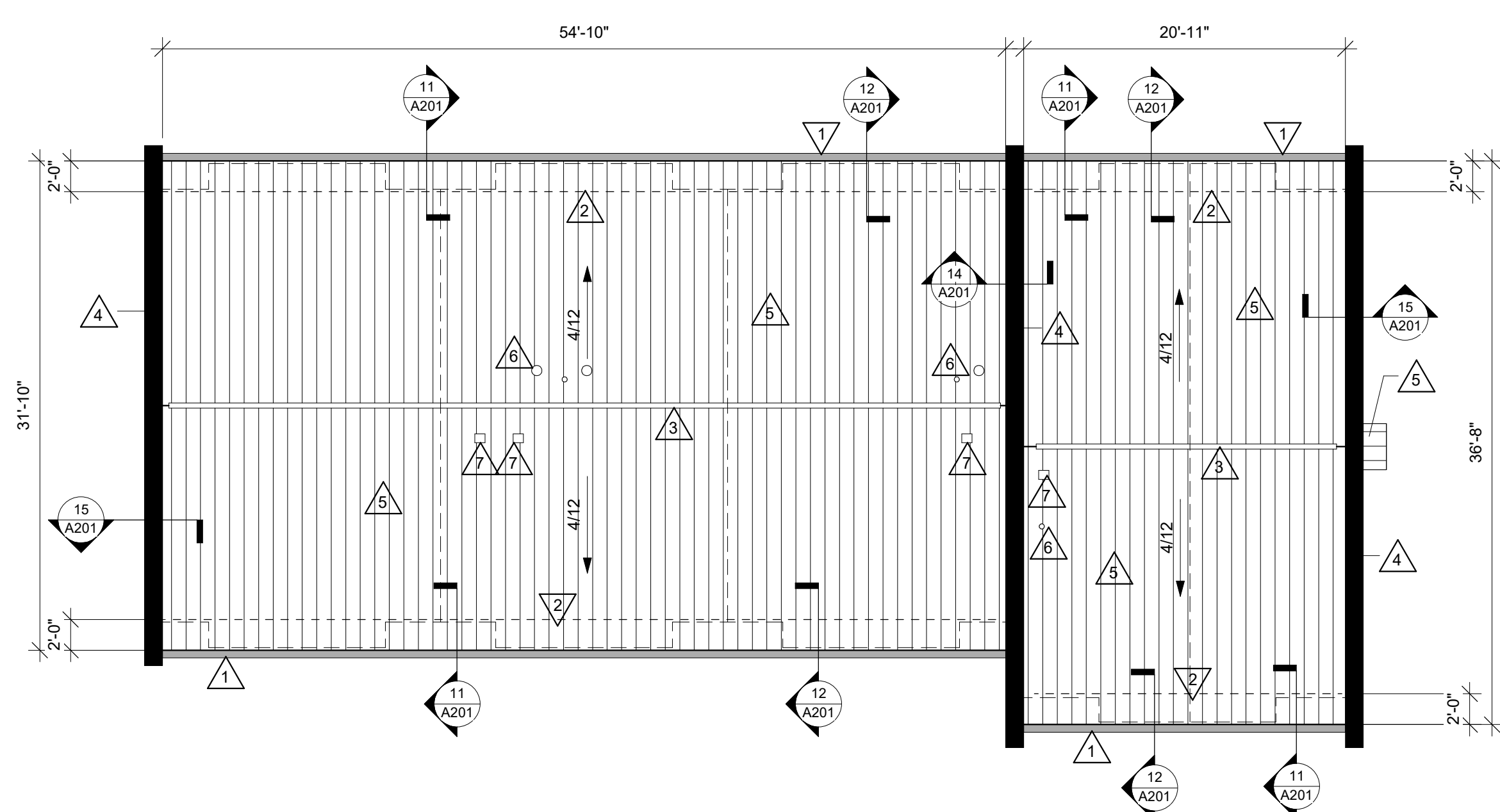
- 1 GUTTER AND DRIP EDGE TO REMAIN. TAKE CARE AS TO NOT DAMAGE DURING METAL ROOF INSTALLATION.
- 2 SNOW GUARDS- BY METAL ROOF SUPPLIER.
- 3 RIDGE VENT- BY METAL ROOF SUPPLIER. SEE DETAIL SHEET A201.
- 4 PREFINISHED SHEET METAL CAP FLASHING.
- 5 NEW STANDING SEAM METAL ROOF.
- 6 EXISTING PIPE PENETRATIONS. SEE SHEET A201 FOR NEW BOOT DETAIL.
- 7 NEW EXHAUST VENT. ROOFING CONTRACTOR TO DISCONNECT DUCT PRIOR TO REMOVAL. RECONNECT AFTER INSTALLATION OF NEW.



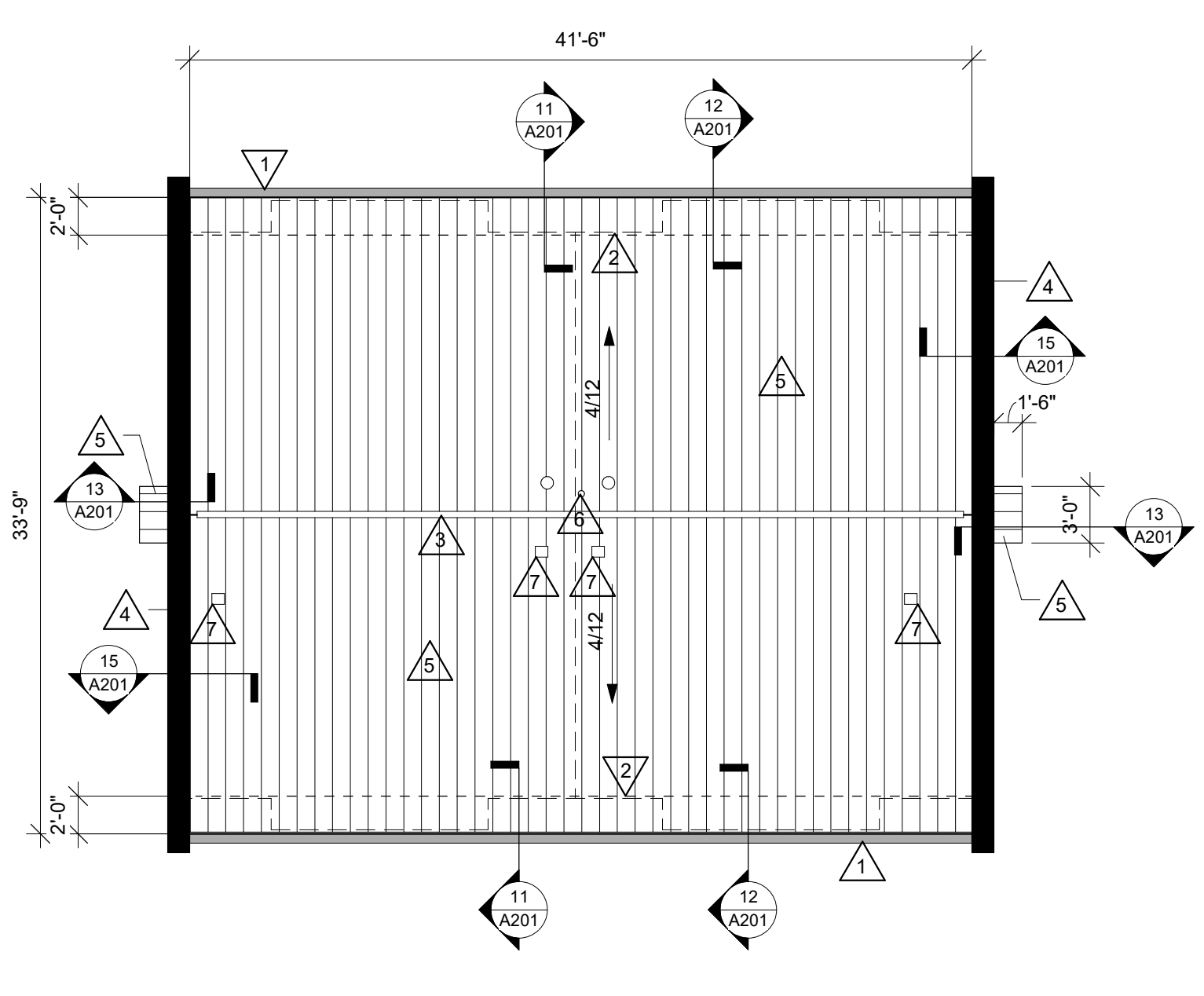
UNIT 'C'



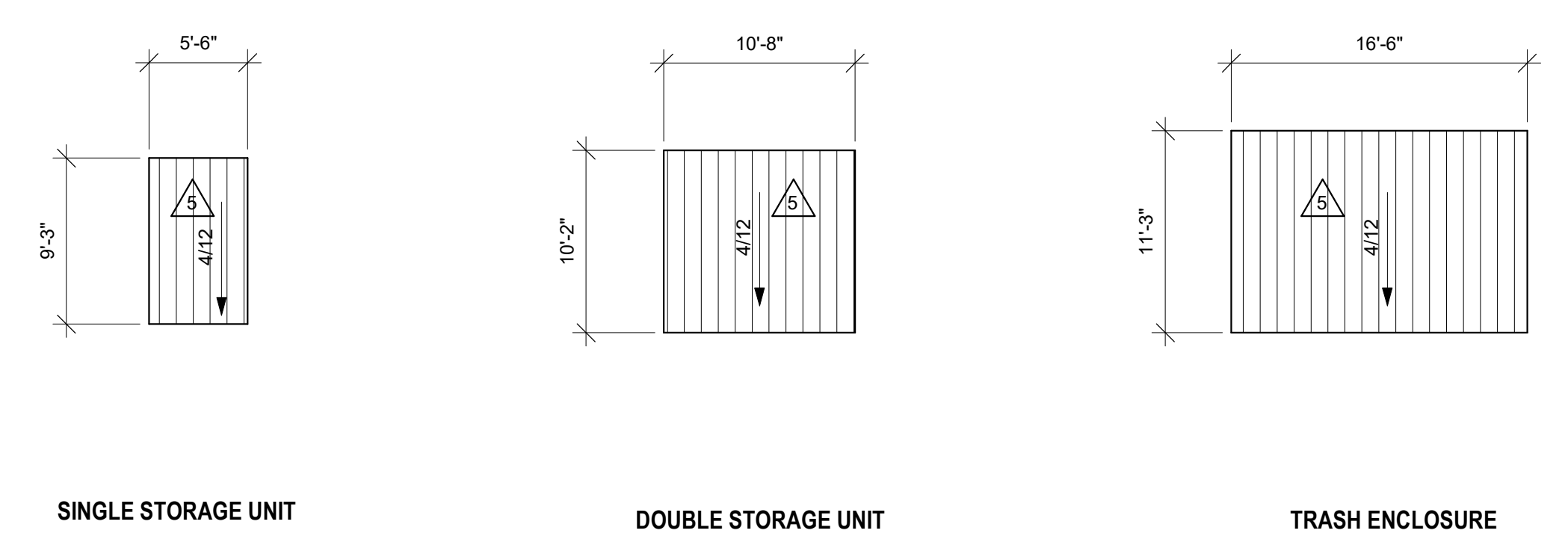
UNIT 'D'



UNIT 'F'



UNIT 'G'



STORAGE SHED GENERAL NOTES:
 A- SEE SITE PLANS FOR LOCATIONS.
 B- EXISTING METAL FASCIA TO REMAIN.

REVIEW
NOT FOR CONSTRUCTION

No.	Description	Date
A01	Addendum 1	12-21-2022

Graphic Scale: VARIES
Last Update: 12/21/2022 6:24:17 AM